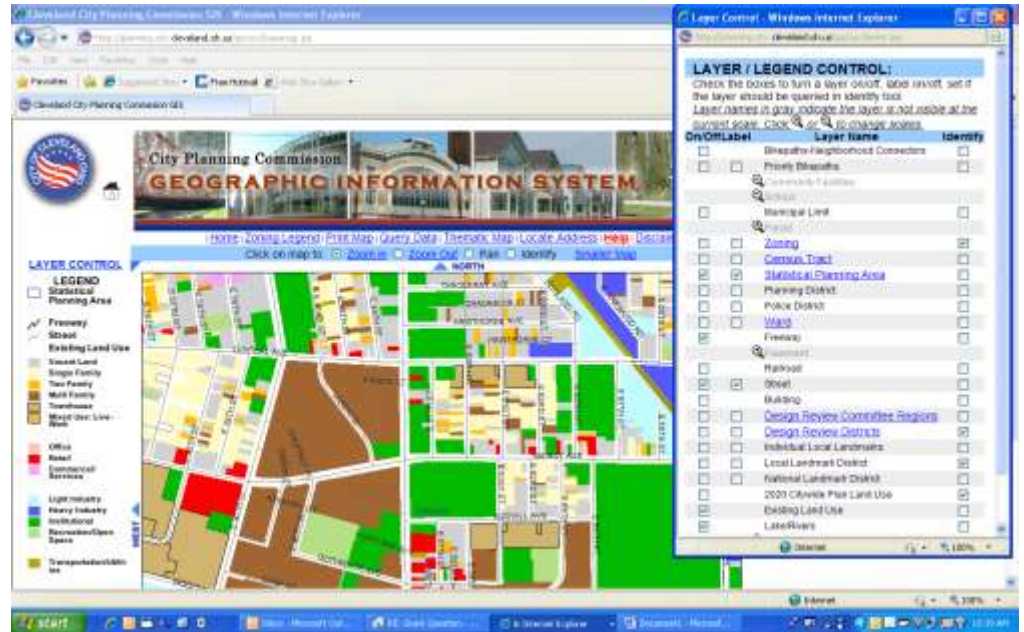


How to determine if a property has been residential within the last 50 years:

1. Look at current zoning by going to Cleveland City website:

<http://planning.city.cleveland.oh.us/gis/cpc.html>

- Click on the interactive map links
- Use the locate address tab at the top
- Make sure the Layer Control (on the left-hand side) is selected for existing land use and zoning



2. Use the Sanborn Fire Insurance Maps (1867-1970) to determine the past land uses by going to:

<http://dmc.ohiolink.edu.proxy.oplin.org/oplinmap.htm>

- To do a search for example:

(E.79th and Superior Ave. you would enter)

“Seventy-ninth E. and Superior Ave. N.E.”

- These maps are not always comprehensive, you may not find your lot



Note: In order to copy these images into a word document you may need to push “Ctrl + Print Screen” and then Paste into your document